

The following Notice to Mariners is published for general information

Australia – Victoria

No. 030 (T) - 2025

PORT OF MELBOURNE APPLETON DOCK BERTHS CONDEMNED BOLLARDS & NO-GO ZONES

Date: 13 January 2025

Refers: N/A

Details: Mariners and port users are advised that condemned bollards exist, and no-go zones have been established at **Appleton Dock berths**.

Condemned bollards (refer attached bollard plan) are covered with red boxes and are not to be used under any circumstance.

No-go zones (refer attached port load chart) with temporary barriers have been established until repairs have been completed.

For further information, please email the Navigation Services department at NavigationServices@ports.vic.gov.au.

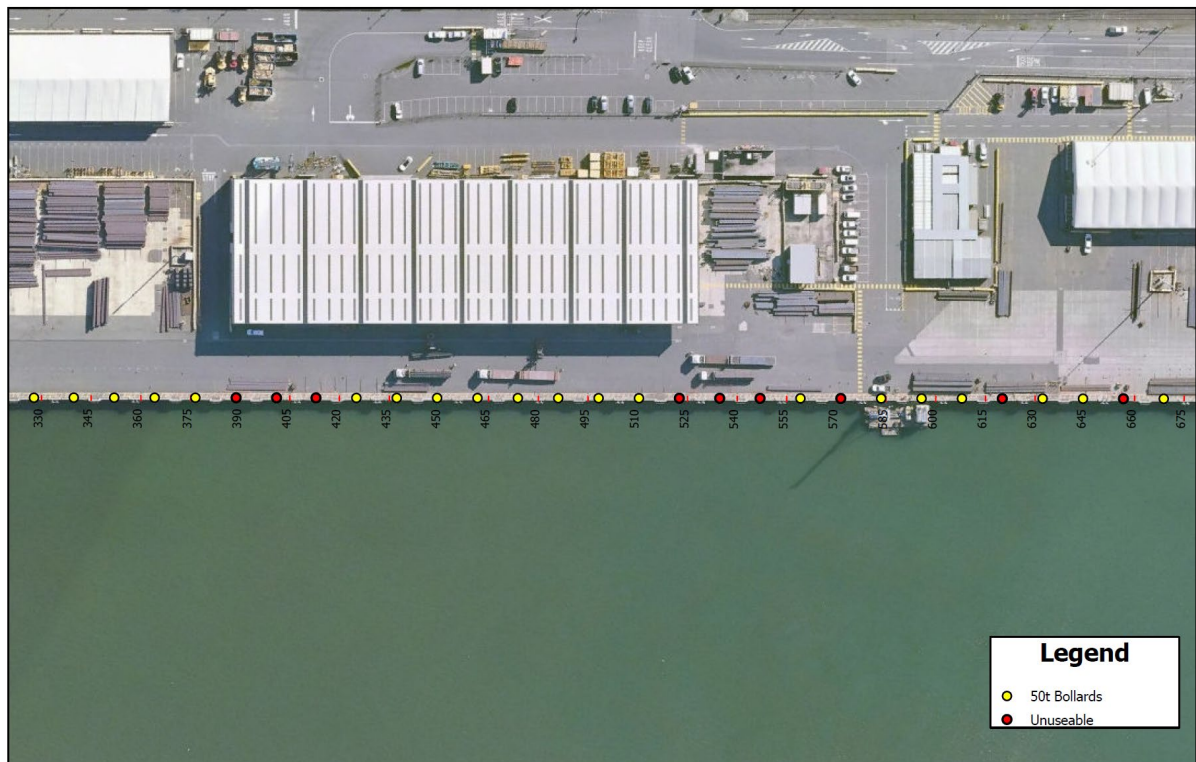
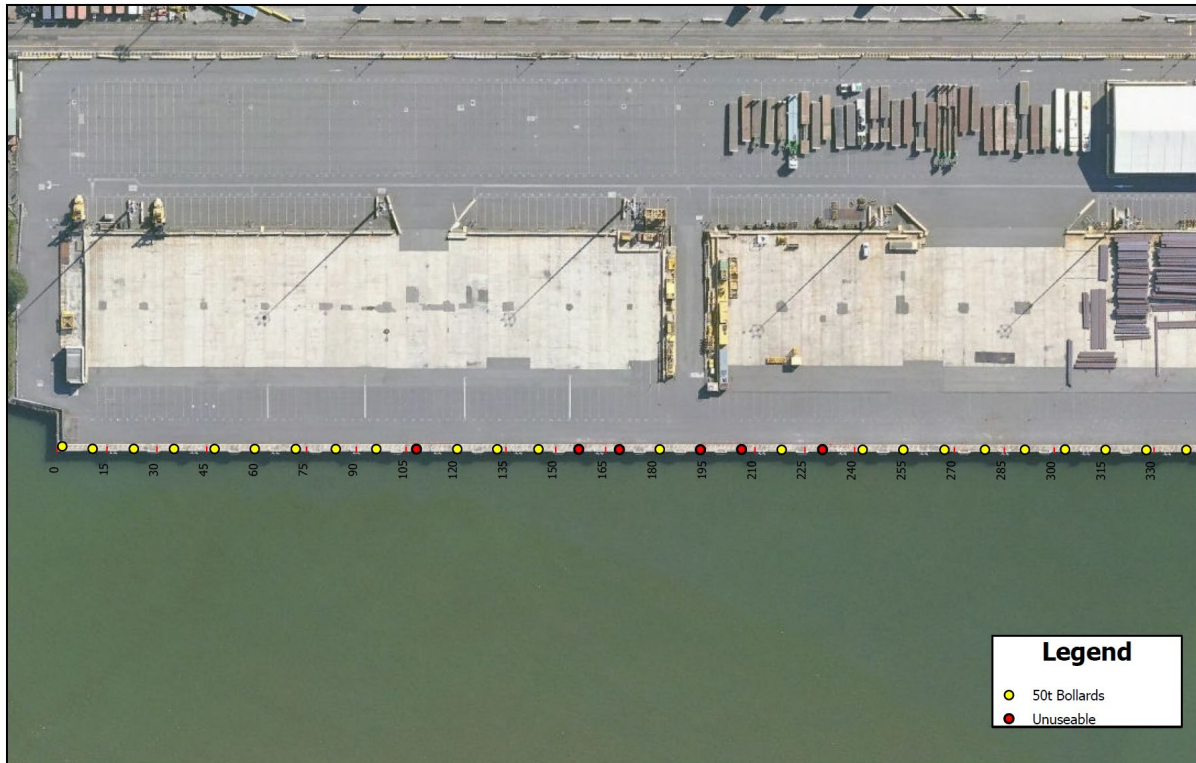
Charts & Publications affected: ENC AU5MEL01

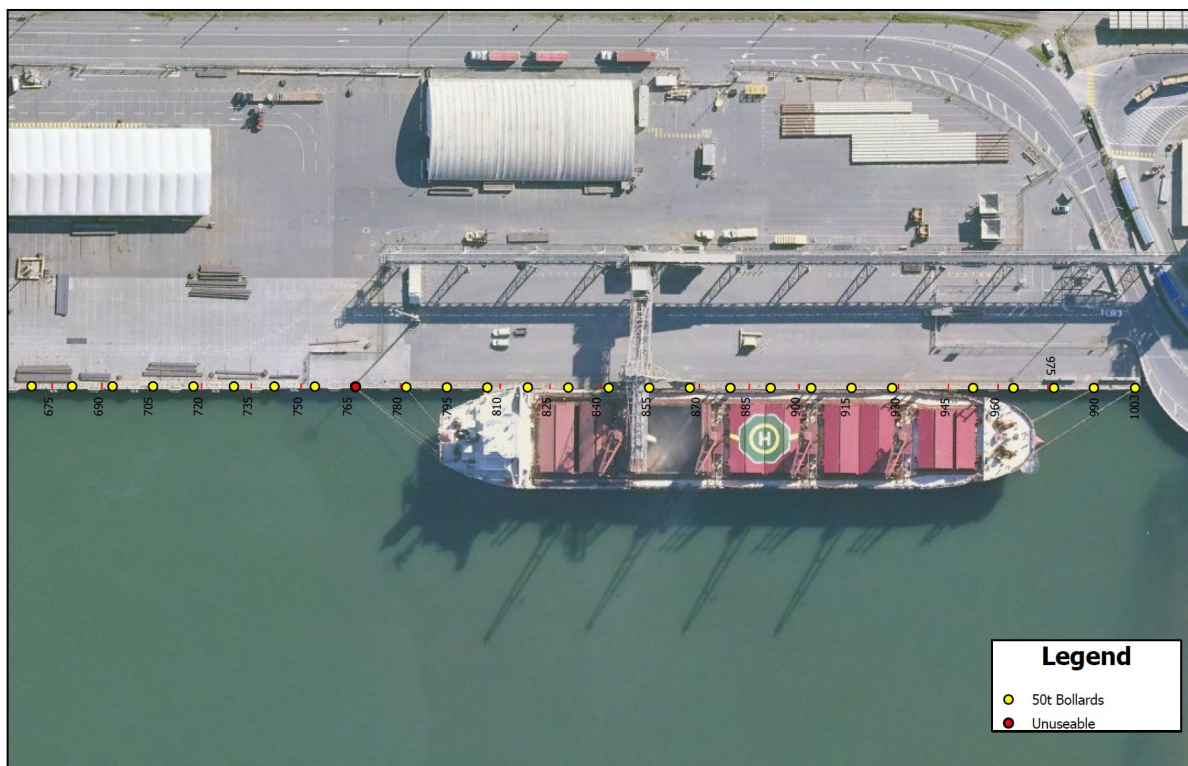
Further notice: Further notice will be issued.



David Tilsley
Deputy Harbour Master
Navigation Services

Appleton Dock berths - Bollard plan





Appleton Dock berths – No-go zones established

