

## Australia – Victoria

No. 486 (T) - 2024

### PORT OF MELBOURNE SOUTH CHANNEL BEACON REPLACEMENT WORKS

**Date:** 14 November 2024

**Refers:** N/A

**Details:** Mariners are advised beacon replacement works will be undertaken from **18 November 2024** until further notice for the following beacons in **South Channel** (reference figure 1 and 2):

- **Popes Eye and Entrance Beacon**
- **Beacons 1, 2, 3, 4, 6, 7, 8, 9, 10, 11, 12, 13, 15, 16, 18, 19, 20**

Works will be conducted **daily** from **0700 hrs to 1900 hrs**, subject to weather conditions. The works will involve removal of existing beacon topside, installation of new beacon pile, removal of original pile and installation of new beacon topside.

Beacon light arrangements during replacement works as follows:

1. New beacon pile present and original beacon pile present – flashing yellow light installed on new beacon pile – FL (Y)
2. New beacon pile present and original beacon pile removed – temporary light installed on new beacon pile with original beacon light characteristics
3. New beacon pile not present and original beacon pile removed – nil light

The following conditions will apply for the **works**:

1. **30 minutes** prior to the **passing** of a **commercial vessel (SOLAS), transiting South Channel**, works, diving and crane operations to cease.
2. *AMS Gladstone* may be moored **during works** in adjacent waters to South Channel beacons.
3. *AMS Gladstone* may place mooring anchors **up to 30m** inside channel toe line where required (reference figure 2). Anchor position will be identified by a yellow buoy with yellow flashing light. On each occasion Lonsdale VTS to be informed.
4. *AMS Gladstone* and work vessels are fitted with **AIS**.
5. Dive vessels will display International Code flag Alpha during diving operations.

Restrictions for **commercial vessels (SOLAS) transiting South Channel** during works when barge is on location:

- **Maximum speed 12kts when passing barge**
- **Minimum passing distance 50m** (from barge and mooring anchors)
- **One way transit between beacons 9/10 and 21/22 when *AMS Gladstone* is moored at beacons 11 – 20 and anchors are positioned inside channel toe line**

Restrictions for passing domestic commercial vessels and recreational vessels during **works**:

- ***Minimum wake and wash***
- ***Minimum passing distance of 50m***

The works may involve either of the following **vessels**:

- *AMS Gladstone (64m LOA barge with 250t crane)*
- *Rhumb 4113 (41m LOA storage barge)*
- *Ando (tug)*
- *Allunga (tug)*
- *Vital (tug)*
- *Henk*
- *Lobo*
- *Eliza*
- *ERV1*

Works supervisor can be contacted on **0488 939 222**. Vessels supporting works can be contacted on VHF Channel 12.

**Mariners are advised to navigate with additional caution in the vicinity of South Channel beacons during beacon replacement works.**

For further information, please email the Navigation Services department at [NavigationServices@ports.vic.gov.au](mailto:NavigationServices@ports.vic.gov.au) or contact Melbourne VTS on 9644 9700 / VHF Channel 12.

**Charts &  
Publications  
affected:**

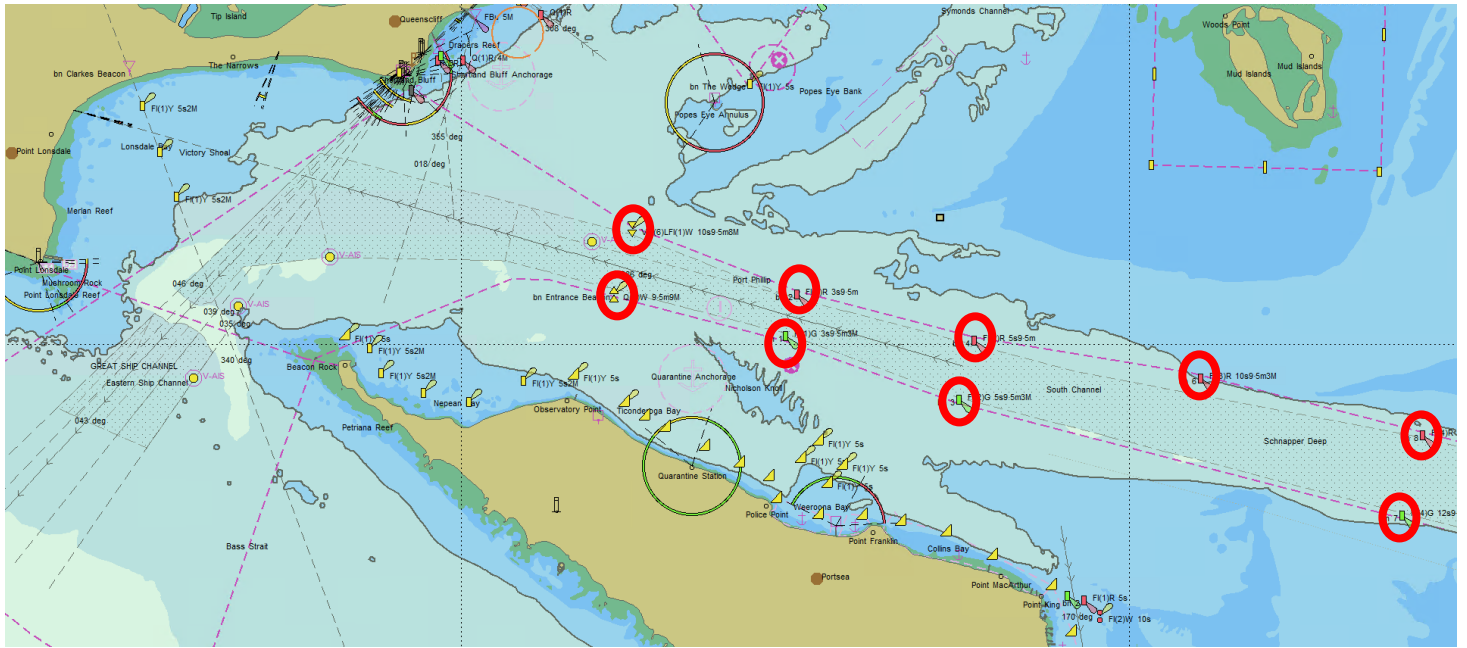
ENC AU5MEL01

**Further notice:**

Further notice will be issued



**Sheldon Rodrigues  
Acting Harbour Master**



**Figure 1 - NOT FOR NAVIGATIONAL USE**



**Figure 2 - NOT FOR NAVIGATIONAL USE**

**○ AMS Gladstone will be moored during works in adjacent waters to beacons 1-10, Popes Eye and Entrance Beacon. Restrictions for commercial vessels (SOLAS): maximum speed 12kts when passing barge, minimum passing distance 50m**

**○ AMS Gladstone will be moored during works in adjacent waters to beacons 11-20. Mooring anchors may be up to 30m inside channel toe line. Restrictions for commercial vessels (SOLAS): maximum speed 12kts when passing barge, minimum passing distance 50m, one way transit between beacons 9/10 and 21/22 when anchors are positioned inside channel toe line. Lonsdale VTS to advise shipping.**

This notice is a direction of the Harbour Master pursuant to section 232 of the *Marine Safety Act 2010* (Vic)  
The requirements of section 232(2) have been taken into account.

Ports Victoria Notices to Mariners can be downloaded from the website, [ports.vic.gov.au](https://ports.vic.gov.au)



**AMS Gladstone**



**Rhumb 4113**



**Allunga**



**Ando**



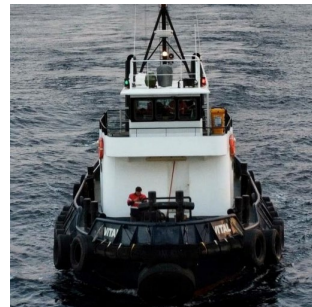
**Henk**



**Lobo / Eliza**



**ERV1**



**Vital**

This notice is a direction of the Harbour Master pursuant to section 232 of the *Marine Safety Act 2010* (Vic)  
The requirements of section 232(2) have been taken into account.

Ports Victoria Notices to Mariners can be downloaded from the website, [ports.vic.gov.au](https://ports.vic.gov.au)