

The following Notice to Mariners is published for general information

Australia – Victoria**No. 205 (T) - 2025****PORT OF MELBOURNE
SOUTH CHANNEL
ENTRANCE BEACON DESTROYED****Date:** 16 April 2025**Refers:** NtM 199 (T) – 2025 and is hereby cancelled**Details:** Mariners are advised that **South Channel Entrance Beacon** (ADLL number: K 2322-25) located in position **38° 17.705' S 144° 41.146' E** has been destroyed.

The remaining beacon pile is leaning at an approximate 45-degree angle to the seafloor to the south of its charted position.

The extremity of the remaining beacon pile presents an obstruction with a **least depth of 4.9m**.

A virtual aid to navigation '**ENTRANCE BEACON**' remains on station on the position of the destroyed beacon.

A **north cardinal mark buoy** has been established in the vicinity of the destroyed beacon in the following position:

Buoy	Characteristics	Position
North cardinal mark	Q	38°17.698' S 144°41.123' E

For further information, please email the Navigation Services department at NavigationServices@ports.vic.gov.au or contact Melbourne VTS on 9644 9700 or on VHF Channel 12.

Mariners are advised to navigate with additional caution in the vicinity of the destroyed beacon.

**Charts &
Publications
affected:**

AUS 143, AUS 144

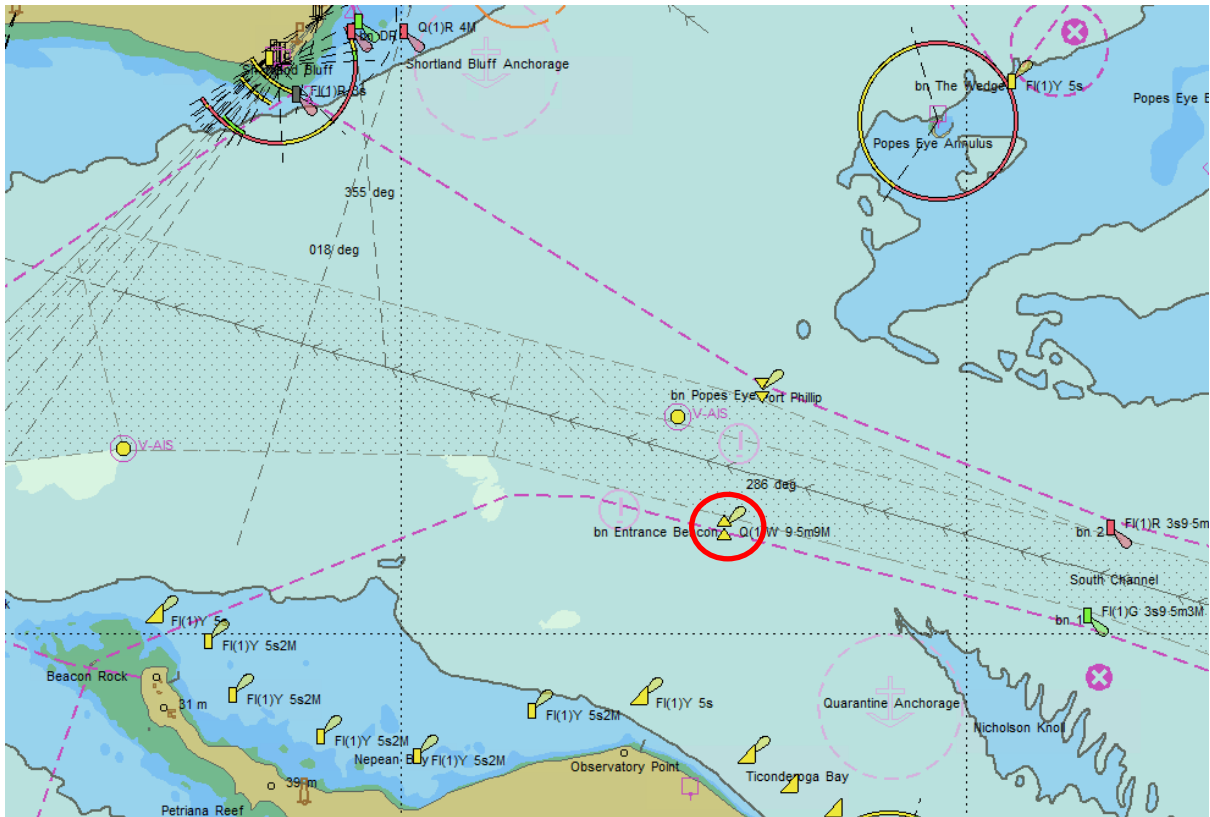
ENC AU5RIP01

Admiralty Digital List of Lights - Area 7 - Volume K

Further notice: Further notice will be issued



David Tilsley
Deputy Harbour Master
Navigation Services



NOT FOR NAVIGATIONAL USE



NORTH CARDINAL MARK BUOY ESTABLISHED