

Australia – Victoria

No. 428 (T) - 2025

PORT OF MELBOURNE MELBOURNE CHANNELS BEACON REPLACEMENT WORKS

Date: 20 August 2025

Refers: N/A

Details: Mariners are advised beacon replacement works will be undertaken in **Port Melbourne Channel, Williamstown Channel, Yarra River and Port Phillip Bay**, from **25 August 2025** until further notice.

Works will be conducted **daily, around shipping**, from **0600 hrs to 1800 hrs**, subject to weather conditions. Work vessels and barge will **demobilise** from site each day.

Location	Beacon
Port Melbourne Channel	71, 77
Williamstown Channel	15, 16, 17, 17A, 19, 19A, 20, 22
Yarra River	24, 25, 26, 27, 28, 29, 30, 31, 33, 34, 35, 36, 37, 38A, 38B, 39, 40, 41, 43, 45, 48, West Cardinal (<i>Bolte Bridge</i>)
Port Phillip Bay	Gellibrand Shoal

The works will involve installation of new beacon pile, removal of existing topside, removal of original pile and installation of new beacon topside. Up to 3 beacons in the same range of visibility may be in different stages of replacement during works.

Beacon light arrangements during replacement works as follows:

1. New beacon pile present and original beacon pile present – flashing yellow light installed on new beacon pile – FL (Y) 2.5s
2. New beacon pile present and original beacon pile removed – temporary flashing light installed on new beacon pile with original beacon flashing light characteristics
3. New beacon pile not present and original beacon pile removed – nil light

The works may involve either of the following vessels:

- *AMS Gladstone (64m LOA barge with 250t crane)
(fitted with AIS, during hours of darkness yellow flashing light at the bow and stern, flood lighting illuminating the barge deck)*
- *Ando (tug)*
- *Allunga (tug)*
- *Henk*
- *Lobo (or similar dive vessel)*
- *ERV1*

The following conditions will apply for the **works at beacons 15, 24, 25, 27, 29, 30, 31, 33, 34, 35, 36, 37, 38A, 38B, 39, 40, 45 and 48:**

1. *AMS Gladstone* to be moored **outside** of channel toe-line
2. Prior to the **passing** of a **commercial vessel (SOLAS)**, including the transit of the bunker vessel, works, diving, crane operations to cease and personnel to vacate barge.

The following conditions will apply for the **works at beacons 26, 28, 41 and 43:**

1. *AMS Gladstone* may be moored **inside** the channel toe-line
2. **30 minutes** prior to the **passing** of a **commercial vessel (SOLAS)**, including the transit of the bunker vessel, works, diving, crane operations to cease, *AMS Gladstone* to be re-moored in a position **outside** of the channel toe-line, and personnel to vacate barge.

The following conditions will apply for the **works at beacons 17, 17A, 19, 19A, 20, 22, 71, 77, West Cardinal (Bolte Bridge) and Gellibrand Shoal:**

1. *AMS Gladstone* to be moored **outside** of channel toe-line
2. Prior to the **passing** of a **commercial vessel (SOLAS)**, including the transit of the bunker vessel, works, diving, crane operations to cease.

The following conditions will apply for the **works at beacon 16:**

1. *AMS Gladstone* may be moored **inside** the Western By-pass Channel
2. Prior to the **passing** of a **commercial vessel (SOLAS)**, including the transit of the bunker vessel, works, diving, crane operations to cease

Restrictions for **commercial vessels (SOLAS)** when passing works vessels during works:

- **All beacons - Minimum wash.** Contact Melbourne VTS if not achievable to enable notification to works contractor.
- **Beacon 16 –** When transiting **Western By-Pass Channel**, **minimum passing distance 100m** to the **west**. No passing of **commercial vessels (SOLAS)** in this area.

Restrictions for passing domestic commercial vessels and recreational vessels when passing works vessels during works:

- **Minimum wake and wash**
- **Minimum passing distance of 50m**

Dive vessels will display International Code flag Alpha during diving operations.

Works supervisor can be contacted on **0431 198 934**. Vessels supporting works can be contacted on VHF Channel 12.

Mariners are advised to navigate with additional caution in the vicinity of work sites.

For further information, please email the Navigation Services department at NavigationServices@ports.vic.gov.au or contact Melbourne VTS on 9644 9700 / VHF Channel 12.

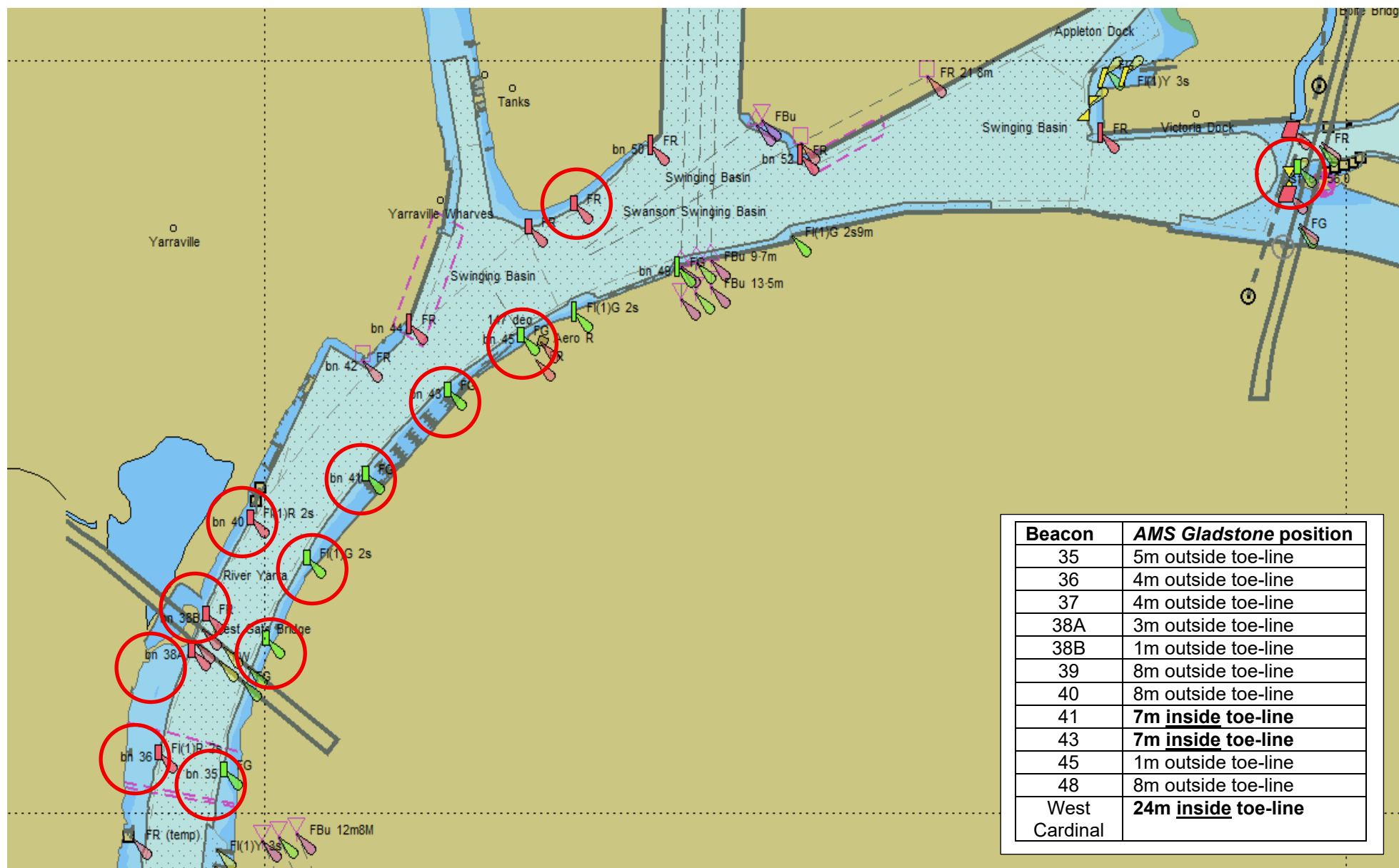
**Charts &
Publications
affected:**

ENC AU5MEL01

**Further
notice:**

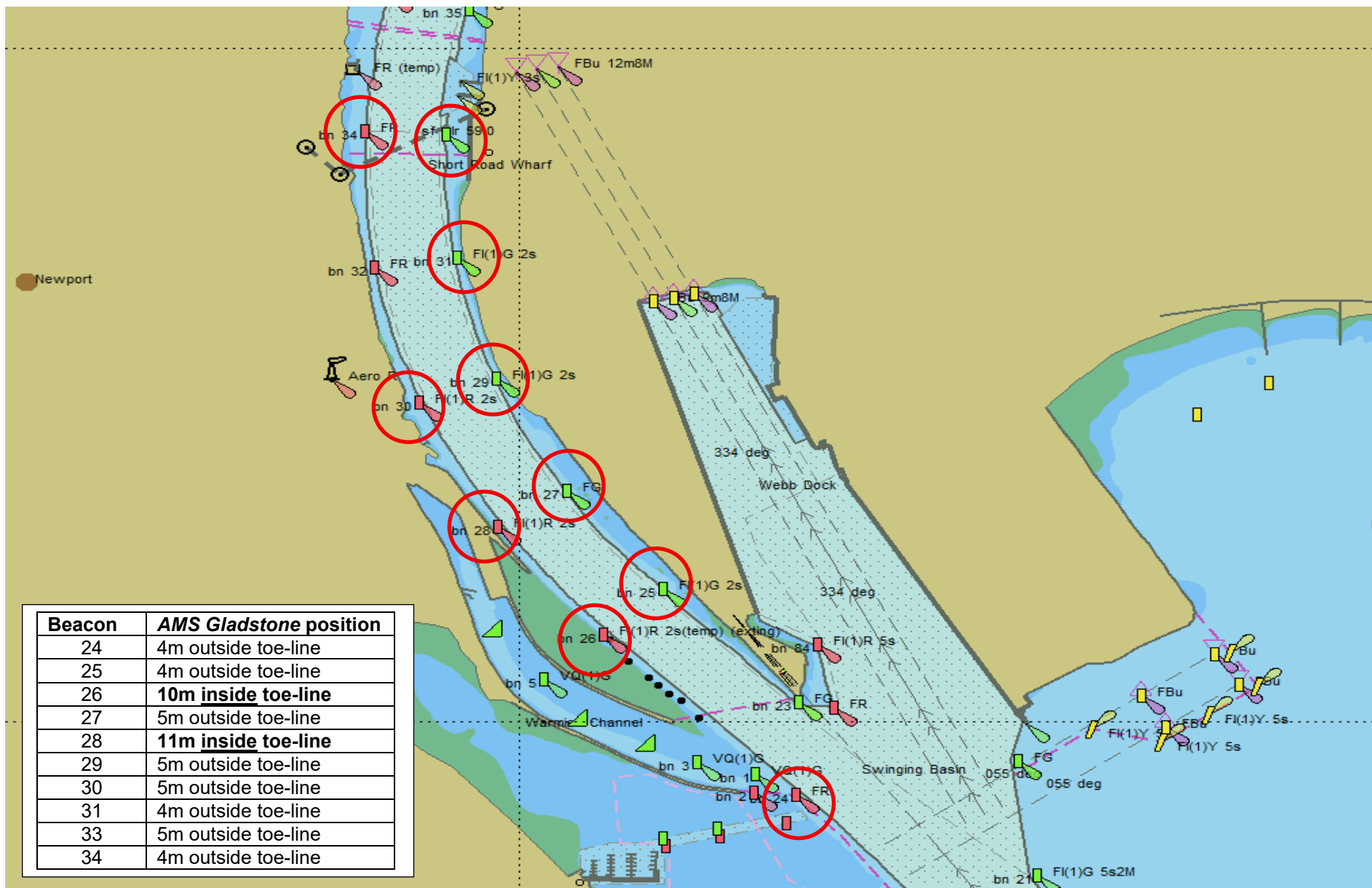
Further notice will be issued.

**Andrew Hays
Harbour Master
Port of Melbourne**



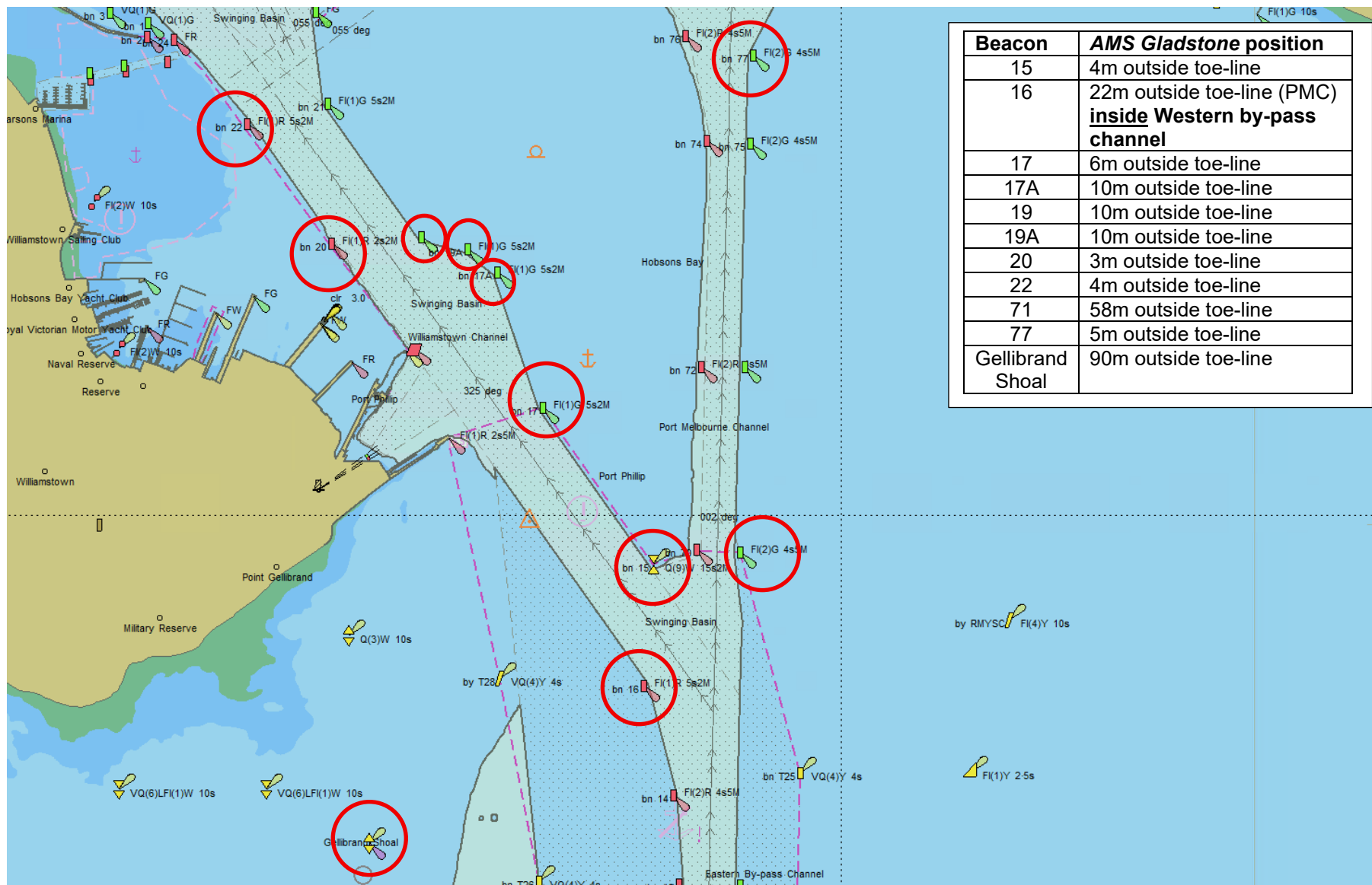
NOT FOR NAVIGATIONAL USE

This notice is a direction of the Harbour Master pursuant to section 232 of the *Marine Safety Act 2010* (Vic)
The requirements of section 232(2) have been taken into account.



NOT FOR NAVIGATIONAL USE

This notice is a direction of the Harbour Master pursuant to section 232 of the *Marine Safety Act 2010* (Vic)
The requirements of section 232(2) have been taken into account.



NOT FOR NAVIGATIONAL USE

This notice is a direction of the Harbour Master pursuant to section 232 of the *Marine Safety Act 2010* (Vic)
The requirements of section 232(2) have been taken into account.

Ports Victoria Notices to Mariners can be downloaded from the website, ports.vic.gov.au

Works Vessels



AMS Gladstone



ERV1



Allunga



Ando



Henk



Lobo / Eliza

This notice is a direction of the Harbour Master pursuant to section 232 of the *Marine Safety Act 2010* (Vic)
The requirements of section 232(2) have been taken into account.

Ports Victoria Notices to Mariners can be downloaded from the website, ports.vic.gov.au