

Australia – Victoria

No. 445 (T) - 2025

PORT OF MELBOURNE SWANSON DOCK

BERTH 3 WEST RESTRICTIONS DUE TO WORKS

Date: 29 August 2025

Refers: N/A

Details: Mariners and port users are advised that **Swanson Dock berth 3 West** will not be available for commercial vessels (SOLAS) due to works from **2 September 2025** until further notice.

A shore side works area will be established between **chainage 600 m** and **chainage 993 m**.

Under wharf works, including the use of staging platforms, work boats and diving operations may be conducted between **chainage 575 m** and **chainage 993 m**.

A mooring line snap back frame will be installed at **chainage 595 m** (refer diagram). The northern most bollard available for mooring operations is located at **chainage 593 m**.

The following conditions will apply for **works**:

1. No **diving operations** and / or **under wharf works** within **50m** of a **berthed commercial vessel (SOLAS)**
2. **30 minutes** prior to a **commercial vessel (SOLAS)** arriving or departing at Swanson Dock berth 2 West, 2 East, 3 East, diving operations and under wharf works to cease
3. **30 minutes** prior to the **bunker barge** arriving or departing from a vessel at Swanson Dock berth 2 West, 2 East, 3 East, diving operations and under wharf works to cease
4. **No diving operations or hot works** will take place when **bunkering** is being conducted at Swanson Dock
5. Clear access for vessel, cargo, and mooring operations, both landside and waterside will be maintained south of **chainage 595 m**
6. International Code flag Alpha displayed during diving operations

Restrictions for **domestic commercial vessels** during **works**:

- **Minimum wake and wash**
- **Minimum passing distance of 50m**
- **Non-essential vessels are restricted from entering Swanson Dock**

Mariners are advised to navigate with additional caution in the vicinity of Swanson Dock during works.

For further information, please email the Navigation Services department at NavigationServices@ports.vic.gov.au or contact Melbourne VTS on 9644 9700 / VHF Channel 12.

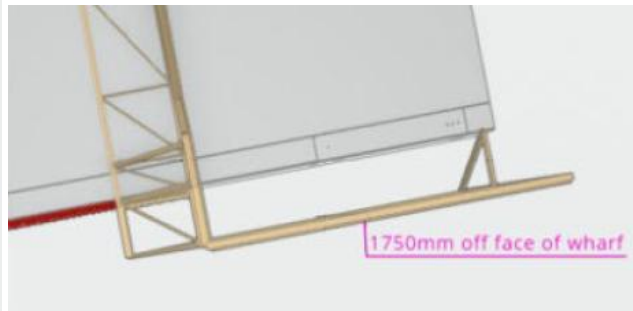
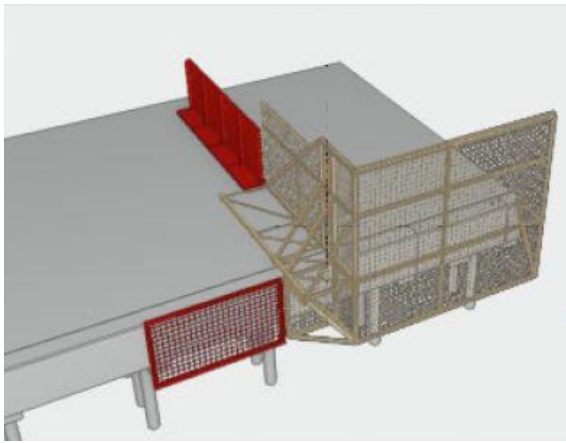
**Charts &
Publications
affected:**

ENC AU5MEL01

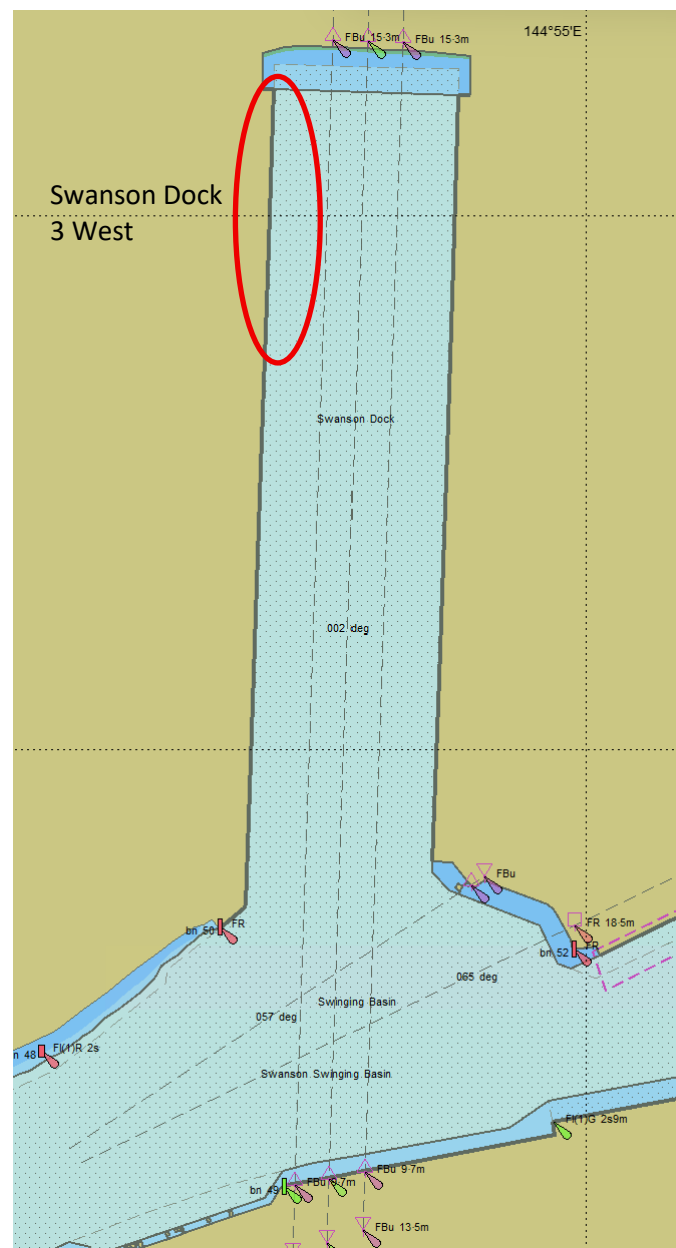
Further notice:

Further notice will be issued.

**Andrew Hays
Harbour Master
Port of Melbourne**



MOORING LINE SNAP BACK FRAME



NOT FOR NAVIGATIONAL USE

This notice is a direction of the Harbour Master pursuant to section 232 of the *Marine Safety Act 2010* (Vic)
The requirements of section 232(2) have been taken into account.

Ports Victoria Notices to Mariners can be downloaded from the website, ports.vic.gov.au