

The following Notice to Mariners is published for general information

**Australia – Victoria**

**No. 075 - 2025**

**PORT OF MELBOURNE  
TRANSIT ONLY ZONE  
WRECK**

**Date:** 6 February 2025

**Refers:** N/A

**Details:** Mariners are advised that a wreck (approximately 6 metres in length) exists in the following position:

- 37° 56.998'S 144° 55.167'E

Least depth of **14.3m** exists in the vicinity of the wreck.

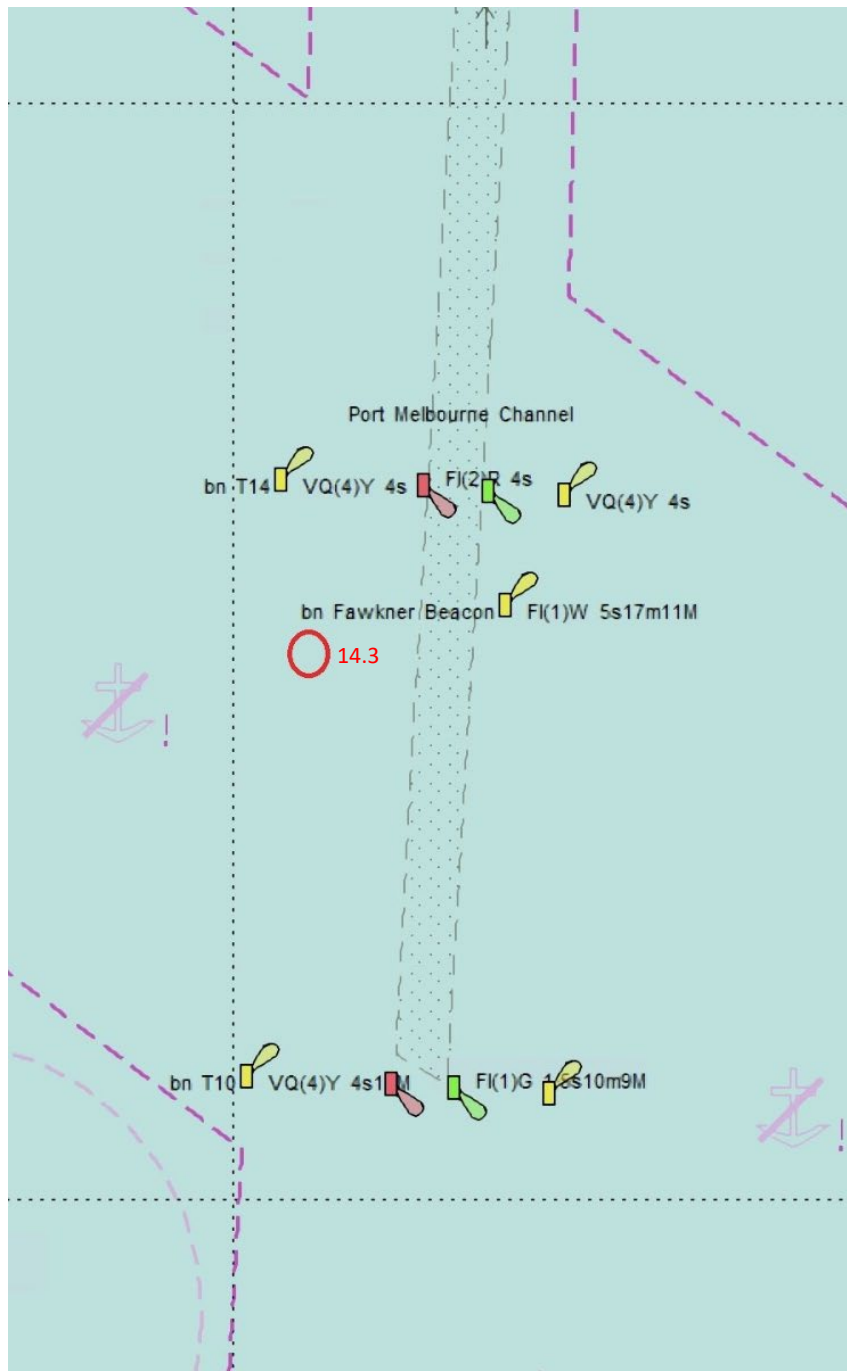
For further information, please email the Navigation Services department at [NavigationServices@ports.vic.gov.au](mailto:NavigationServices@ports.vic.gov.au).

**Charts &  
Publications  
affected:** AUS 155  
ENC AU5MEL01

**Further notice:** No further notice will be issued.



**David Tilsley**  
Deputy Harbour Master  
Navigation Services



**Position of wreck**

**NOT FOR NAVIGATIONAL USE**